

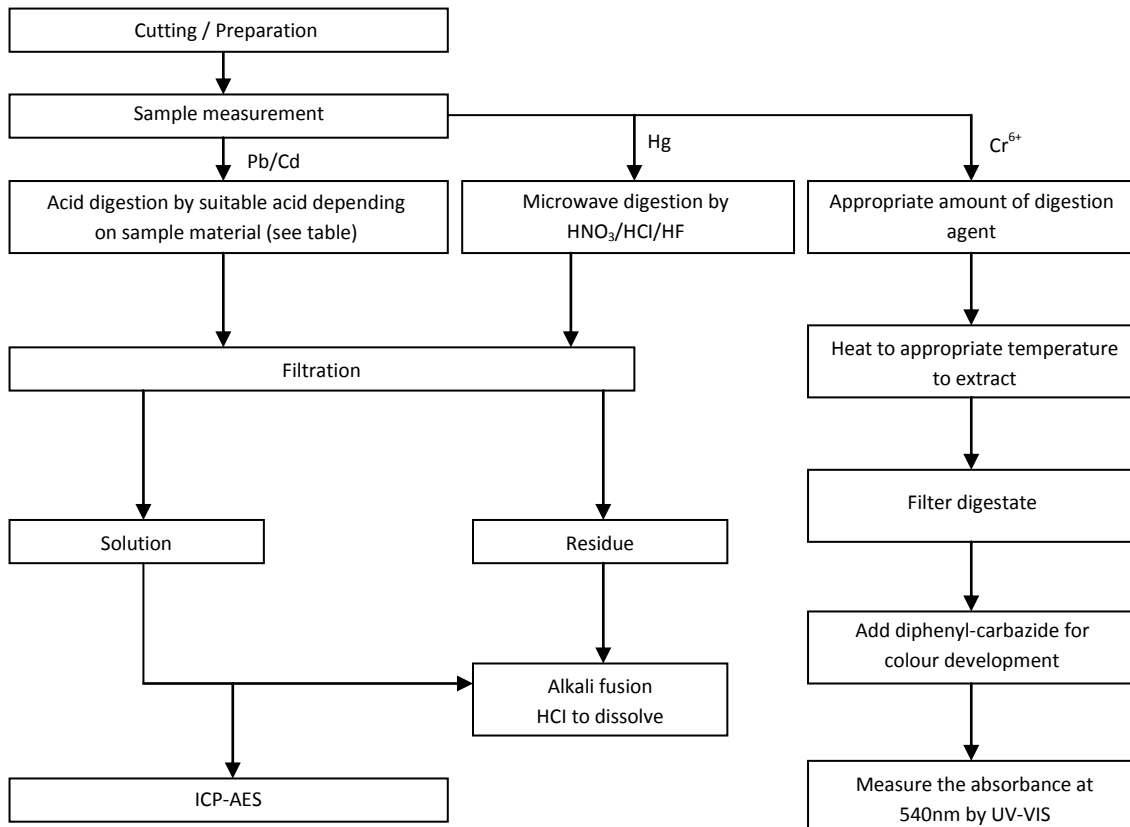
**DOUBLE-SIDED TRANSFER TAPE
HB2065
TEST RESULTS**

Test Item	Unit	Method	MDL	Result
Cadmium (Cd)	mg/kg	IEC 62321:2008	2	n.d
Lead (Pb)	mg/kg	IEC 62321:2008	2	n.d
Mercury (Hg)	mg/kg	IEC 62321:2008	2	n.d
Hexavalent Chromium Cr (VI)	mg/kg	IEC 62321:2008	2	n.d
Halogen:				
Halogen Flouride (F)	mg/kg	IEC 14582:2007	50	n.d
Halogen Chlorine (Cl)			50	n.d
Halogen Bromine (Br)			50	n.d
Halogen Iodine (I)			50	n.d
Sum of PBBs:				
Monobromobiphenyl	mg/kg	IEC 62321:2008	5	n.d
Dibromobiphenyl			5	n.d
Tribromobiphenyl			5	n.d
Tetrabromobiphenyl			5	n.d
Pentabromobiphenyl			5	n.d
Hexabromobiphenyl			5	n.d
Heptabromobiphenyl			5	n.d
Octabromobiphenyl			5	n.d
Nonabromobiphenyl			5	n.d
Decabromobiphenyl			5	n.d
Sum of PBDEs:				
Monobromodiphenyl	mg/kg	IEC 62321:2008	5	n.d
Dibromodiphenyl			5	n.d
Tribromodiphenyl			5	n.d
Tetrabromodiphenyl			5	n.d
Pentabromodiphenyl			5	n.d
Hexabromodiphenyl			5	n.d
Heptabromodiphenyl			5	n.d
Octabromodiphenyl			5	n.d
Nonabromodiphenyl			5	n.d
Decabromodiphenyl			5	n.d

Notes:

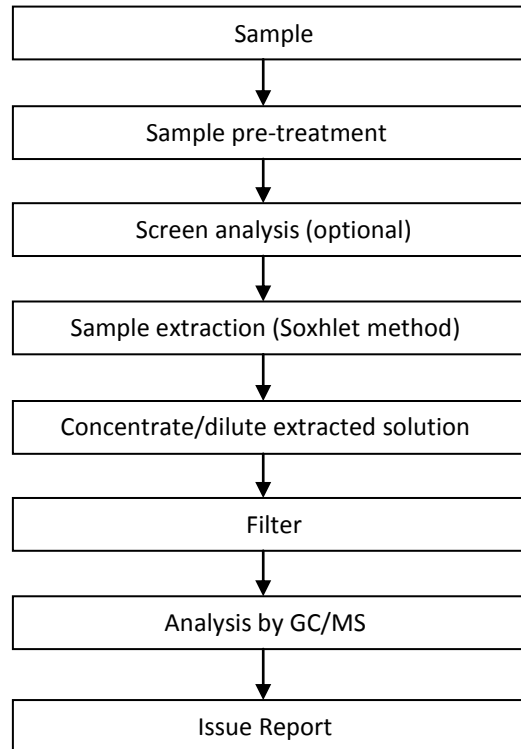
1. mg/kg = ppm; 0.1wt% = 1000ppm
2. n.d. = Not detected
3. MDL = Method detection limit

These samples were dissolved totally by the pre-conditioning method shown in the following flow chart. (Cr⁶⁺ test method excluded).



Sample Material	Acid
Steel, copper, aluminium, solder	Aqua regia, HNO ₃ , HCl, HF, H ₂ O ₂
Glass	HNO ₃ , HF
Gold, platinum, palladium, ceramic	Aqua regia
Silver	HNO ₃
Plastic	H ₂ SO ₄ , H ₂ O ₂ , HNO ₃ , HCl
Others	Any acid to total digestion

PBB/PBDE analytical flowchart.



Analytical flowchart of Halogen content.

